



# DRINKS MENU



*"Wine making has always fascinated me; it's a magical process where tradition, passion, and science are blended together and captured in one stunning bottle. When it came to launching my own wine range, it was very important to set the same standards and quality as I expect in my restaurants"* - GORDON RAMSAY

# WINE

---

# OF THE



---

# SEASON

## ROSSO

---

*Rosso wine is intense ruby red in colour with complimenting aromas of fresh red fruits. You'll also find hints of juicy blueberry and blackberry on the palette, and a touch of flint. This wine has good depth, approachable tannins and texture, and a soft and succulent finish.*

## BIANCO

---

*A vibrant white Italian wine with fresh fruity flavours of green apple and peach, and bright floral aromas on the nose. It shows refreshing acidity with a mouthwatering long finish with mineral notes.*

## ROSSATO

---

*Pale pink in colour with fresh cherry aromas, this wine has a fragrant floral palate with an elegant finish. This rosé wine is crafted to perfection, ensuring that every sip takes you on a flavourful journey.*

*regular*  
150ml

\$9

*large*  
250ml

\$14

*bottle*

\$40



# CELLAR LIST



## SPARKLING

### IDEE FIXE PREMIER BRUT

Idée Fixe is crafted from the premium, free-run cuvée of Chardonnay, and meticulous méthode traditionnelle winemaking.

\$95

### POL ROGER

An impressively rich, dry style from one of the oldest and most distinguished Champagne houses.

\$145

### MOET & CHANDON ICE IMPERIAL

The first and only champagne especially created to be enjoyed over ice.

\$145

### MOET & CHANDON ICE ROSE IMPERIAL

Ice Impérial Rosé, is the first and only rosé champagne created to be enjoyed on ice.

\$150

### PIERRE GIMONNET & FILS FLEURON BLANC DE BLANCS

The champagnes of Pierre Gimonnet & Fils are intricately assembled by masterful hands exclusively from enviably positioned and painstakingly tended old vines.

\$210

## WHITE

### CHATEAU DE SANCERRE

Few names are as synonymous with French Sauvignon Blanc as Chateau de Sancerre. The palate is fresh and full-bodied, it opens up to pleasing flavours of orange and grapefruit, enriched with a hint of yellow peach.

\$95

### VASSE FELIX PREMIER CHARDONNAY

A pure, elegant and vibrant style of Chardonnay, embracing the region's powerful fruit with complexity and restraint to express the environment, with the hallmark of Vasse Felix' vineyards.

\$80

### DOMAINE WILLIAM FEVRE CHABLIS

One of the greatest domaines in Chablis. Founded by William Fevre in 1957 Very fresh bouquet with notes of citrus and white fleshed-fruit.

\$125



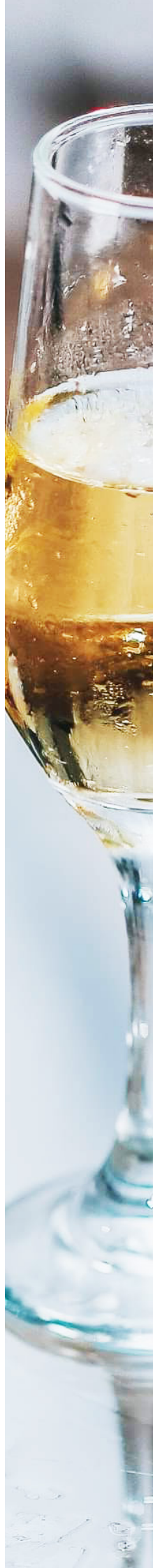


# CELLAR LIST



## RED

<b>MT DIFFICULTY 'ROARING MEG' PINOT NOIR</b> CENTRAL OTAGO, SOUTH ISLAND, NEW ZEALAND This wine highlights the cool nature of the season with densely perfumed, wild black raspberry and black cherry along with a hint of complex dried herb	\$75
<b>PHILIP SHAW No8 PINOT NOIR</b> ORANGE, CENTRAL RANGES, NEW SOUTH WALES Philip Shaw 'No 8' Pinot Noir displays a rich medium to very bright red colour. On the nose its fragrant red berry characters have beautiful upright complexity.	\$85
<b>GUGAL CROZES HERMITAGE ROUGE SYRAH</b> RHONE VALLEY, FRANCE Dark and deep colour. Red fruits, cherry and strawberry with delicate oak aromas.	\$120
<b>YALUMBA 'PARADOX' SHIRAZ</b> NORTHERN BAROSSA, SOUTH AUSTRALIA Crimson red in colour. An alluring bouquet of wild fennel, boysenberry and rose petals, surrounded in subtle notes of smoky oak.	\$105
<b>HENTLEY FARM 'THE BEAST' SHIRAZ</b> BAROSSA VALLEY, AUSTRALIA You can expect the Beast to exhibit great concentration of flavour and richness, with soft grippy tannin.	\$180
<b>YALUMBA "THE OCTAVIUS" SHIRAZ</b> GRAPES SOURCED FROM OLD VINES The average age of the vines for this premium Shiraz is 1936, but some date back to 1854.	\$250
<b>YALUMBA 'THE SIGNATURE' CANERNET SHIRAZ</b> Quite possibly the quintessential Australian Shiraz Cabernet blend, 'The Sig' shows vibrant Barossa aromas of dark fruit and spice and a concentrated palate.	\$135
<b>YALUMBA 'THE MENZIES' CABERNET SAUVIGNON</b> A classic full-bodied expression of Coonawarra Cabernet Sauvignon. Rich, dense and concentrated it cleanly displays classic black current, cassis and cedar with a touch mint and spice.	\$125
<b>CHATEAI TEYSSIER GRAND CRU CLASSE</b> LIBOURNAIS, BORDEAUX, FRANCE A complex nose with lovely aromatics. Cedar scents meld with tones of pomegranate, wild strawberries, violets and red petals.	\$130
<b>YALUMBA "TRICENTENERAY" GRENACHE</b> BAROSSA VALLEY, AUSTRALIA A complex nose with lovely aromatics. Cedar scents meld with tones of pomegranate, wild strawberries, violets and red petals.	\$130
<b>GEMTREE "THE OBSIDIAN" SHIRAZ</b> The fruit is sourced from their oldest and scarcest blocks and matured in new French oak for 3 years. The resultant wine has great concentration and flavour yet it continues with the Gemtree trademark of fine acid and tannin lines.	\$95
<b>OAKRIDGE 864 PINOT NOIR</b> The fruit is sourced from their oldest and scarcest blocks and matured in new French oak for 3 years. The resultant wine has great concentration and flavour yet it continues with the Gemtree trademark of fine acid and tannin lines.	\$125
<b>BESTS OLD VINE PINOT MEUNIER</b> Deeply scented with red cherries, warm earth, grilled nuts, fresh pastries and dried flowers all in the mix. Intense, brooding and focused. Plush red fruits with savoury and silky tannins. The core remains for a long finish.	\$195



# WINE



## CHAMPAGNE & SPARKLING

	<i>glass</i>	<i>bottle</i>
ANGUS BRUT PREMIUM CUVÉE SOUTH AUSTRALIA	9.5	45
CANTINE VEDOVA PROSECCO ITALY	12.5	60
JANSZ PREMIUM CUVÉE TASMANIA	13	60
PIPER HEIDSIECK FRANCE	21	90
WILDFLOWER PROSECCO WESTERN AUSTRALIA	11	48

## WHITE

	<i>regular 150ml</i>	<i>large 250ml</i>	<i>bottle</i>
CHRISTOBELS MOSCATO BAROSSA, SA	9.5	14.5	42
JIM BARRY WATERVALE RIESLING CLARE VALLEY, SA	12	19	55
KING VALLEY PINOT GRIGIO VICTORIA   WINE ON TAP	10	15.5	
SANTE SORTESELE PINOT GRIGIO ITALY   VF	11.5	17	50
MONTALTO PINOT GRIS MORNINGTON PENINSULA   VF			70
RED BANK SAUVIGNON BLANC VICTORIA   WINE ON TAP	9.5	14.5	
GIESEN SAUVIGNON BLANC MARLBOROUGH, NEW ZEALAND   WINE ON TAP	12	19	
THE LANE SAUVIGNON BLANC ADELAIDE HILLS   VF	11.5	17	50
KONRAD ORGANIC SAUVIGNON BLANC MARLBOROUGH, NEW ZEALAND	12	19	55
TWIN ISLAND SAUVIGNON BLANC MARLBOROUGH, NEW ZEALAND   WINE ON TAP	12.5	20	
SHAW & SMITH SAUVIGNON BLANC ADELAIDE HILLS			65
PEDESTAL CHARDONNAY MARGARET RIVER, WA	12	19	55
WISE SEA URCHIN CHARDONNAY MARGARET RIVER, WA	9.5	14.5	42
WISE SEA URCHIN SAUVIGNON BLANC SEMILLON MARGARET RIVER, WA	9.5	14.5	42

## PORT

RAMOS PINTO PORTO TAWNY	9 - 60ml
-------------------------	----------



# WINE



## ROSE

	<i>regular</i> 150ml	<i>large</i> 250ml	<i>bottle</i>
<b>AIX ROSE</b> FRANCE	14	21	60
<b>AD HOC PIP</b> WESTERN AUSTRALIA	11	17	48
<b>MIRIVAL ROSE</b>			85

## RED

	<i>regular</i> 150ml	<i>large</i> 250ml	<i>bottle</i>
<b>JOSEPH CHROMY 'PEPIK'</b> PINOT NOIR TASMANIA	13	20	58
<b>NANNY GOAT PINOT NOIR</b> CENTRAL OTAGO, NEW ZEALAND			65
<b>LA LA LAND TEMPRANILLO</b> MURRAY DARLING, NSW	9.5	14.5	42
<b>SISTERS RUN</b> 'COWS CORNER' G.S.M BAROSSA, SA	11	17	48
<b>QUILTY &amp; GRANDSEN MERLOT</b> BAROSSA, SA	12	19	55
<b>WILDFLOWER CABERNET</b> SAUVIGNON MARGARET RIVER, WA	11	17	48
<b>BREMERTON 'TAMBLYN'</b> CABERNET SHIRAZ MALBEC MERLOT LANGHOLME CREEK, SA   VF			52
<b>EARTHWORKS SHIRAZ</b> BAROSSA, SA	9.5	14.5	42
<b>QUILTY &amp; GRANDSEN SHIRAZ</b> ORANGE, NSW	12	19	55
<b>FOUR IN HAND SHIRAZ</b> BAROSSA, SA			65
<b>CAPE MENTELLE 'TRINDERS'</b> CABERNET SHIRAZ MARGARET RIVER, WA			75
<b>MOUNTADAM CABERNET</b> SAUVIGNON EDEN VALLEY, SA			65
<b>GEMTREE ORGANIC GSM</b> MCLAREN VALE, SA	12	19	55
<b>CORRYTON BURGE SHIRAZ</b> BAROSSA, SA			65
<b>HENTLEY FARM GRENACHE</b> BAROSSA, SA			65

## NON-ALCOHOLIC

<b>ARA SAUVIGNON BLANC</b> MARLBOROUGH, NEW ZEALAND	9.5	14.5	42
<b>HENKELL SPARKLING</b> GERMANY	10.5 - 200ml		





# COCKTAILS



*"When life gives you pineapples,  
make piña coladas."*



## UNIQUELY FICTION

<b>SALTED CARAMEL WHISKY SOUR</b> Johnnie walker black label shaken with whites, salted caramel, lemon sours and whites.	\$20
<b>SILKY ALMOND SOUR</b> A mix of Disaronno velvet liquor, whites, gomme syrup and lemon sours.	\$20
<b>THE PERFECT PEAR</b> Fireball cinnamon whisky, shaken with pear liquor, lemon sours and gomme syrup.	\$19
<b>BARBADOS GINGER BEER</b> Featuring Mount Gay Rum, mixed with fresh lime juice, falernum and topped with ginger beer.	\$19
<b>GRAPE &amp; APPLE SMASH</b> Tanqueray gin meets Marie Brizard elderflower liquor then smashed together with grapes, gomme syrup and fresh lime, topped up with cloudy apple juice.	\$19
<b>FRENCH KISS</b> Ciroc lemon vodka, paired with Marie Brizard premium peach liquor, shaken with grapefruit puree and charged with soda.	\$19
<b>CHARLESTON GRAY</b> Kettle one vodka, mixed with eldeflower liquer, watermelon puree and lime juice.	\$19
<b>PASSIONFRUIT CAPRIOSKA</b> Kettle one vodka, passion fruit puree and haberno lime, shaken and dumped with ice then charged with soda.	\$19

## GET SPRITZED

<b>WATERMELON</b> Grey goose vodka, watermelon puree, prosecco and soda.	\$18
<b>PASSIONFRUIT</b> Grey goose vodka, passion fruit puree, prosecco and soda.	\$18
<b>MANGO</b> Grey Goose Vodka, mango puree, prosecco and soda.	\$18
<b>STRAWBERRY</b> Grey Goose Vodka, Strawberry puree, prosecco and soda	\$18
<b>GRAPEFRUIT</b> Grey Goose Vodka, Grapefruit Puree, prosecco and squash	\$19
<b>THE "SPRITZ" MAS TREE</b> Choice of three in a tree	\$45







## CANDY SHOP

<b>THE RED FROG</b> Kettle one vodka mixed with sours and strawberry puree.	\$19
<b>WATERMELON SUGAR HIGH</b> Lemon Rancho combined with watermelon puree and Mulberry Gin.	\$19
<b>AFTER DINNER MINT</b> Marie Brizard white Chocolate mixed Marie Creme De Menthe and cream.	\$19
<b>BANOFEE PIE</b> Banana and chocolate liquor shaken with cream and salted caramel.	\$19
<b>WHITE CHOCOLATE &amp; MACADAMIA MARTINI</b> A delicious mix of Marie premium White Chocolate, macadamia syrup and cream.	\$19
<b>THE SMORE (SERVED HOT)</b> Marie Brizard dark chocolate, stirred with toasted marshmallow syrup and Licor 43, Topped with hot milk and fresh toasted marshmallow.	\$20
<b>GRANDMA'S PAVLOVA</b> Strawberry and kiwi puree shaken with strawberry gin, lemon and whites, topped with whipped cream.	\$20

## MARGARITAS

*all shaken and dumped with ice*

<b>THE CLASSIC</b> Don Julio blanco, Marie triple sec and fresh lime.	\$20
<b>COCONUT</b> Don Julio Blanco, Marie triple sec, coconut cream and fresh lime juice.	\$20
<b>TOMMY'S</b> Patron reposado, agave nectar and fresh lime juice.	\$22
<b>THE CHILLI DON</b> Chilli infused Don Julio Blanco, Mango puree and fresh lime juice.	\$20
<b>WATERMELON</b> Patron silver, Watermelon puree and lime juice.	\$20
<b>KIWI FRUIT</b> Patron Silver, kiwi fruit puree and lime juice.	\$20
<b>STRAWBERRY</b> Patron Silver, strawberry puree and lime juice.	\$20
<b>MARGARITA TREE</b> Watermelon   Passionfruit   Kiwi Fruit   Strawberry All served in mini patron bottles and presented on a tree	\$75

# THE CLASSICS



<b>OLD FASHIONED   \$19</b> MAKERS MARK BOURBON JOHNNIE WALKER BLACK LABEL SCOTCH MOUNT GAY RUM	<b>MARTINIS   \$19</b> ESPRESSO FRENCH LYCHEE GIN VODKA PAWNSTAR	<b>BACARDI MOJITOS   \$19</b> CLASSIC BLUEBERRY PASSIONFRUIT
--	--	---

<b>APEROL SPRITZ</b> Aperol and prosecco topped with soda.	\$18
<b>PINA COLADA</b> Bacardi Coconut Pineapple Juice and cream.	\$18
<b>FRUIT TINGLE</b> Blue Curacao, Parfait Armour and Triple Sec.	\$18
<b>COSMOPOLITAN</b> Kettle One Vodka, Triple Sec and cranberry juice.	\$19
<b>BLOODY MARY</b> Kettle One Vodka, tomato juice, tabasco with worstechire sauce and celery bitters.	\$19
<b>WHISKY SOUR</b> Johnnie Walker Black, premium sours, gomme and whites.	\$20
<b>PALOMA</b> Patron Reposado, grapefruit puree with a hint of agave and charged with soda.	\$20
<b>LONG ISLAND</b> Bacardi, Gin, Triple Sec, Vodka and Tequila, shaken with Sours and poured over coke,	\$20
<b>NEGRONI</b> Bombay Sapphire Gin, Campari and Sweet Vermouth.	\$20

# TO SHARE

<b>FRUIT TINGLE PITCHER</b> Blue Curacao, Triple Sec and Parfait Armour charged with lemonade and drizzled with Grenadine.	\$40
<b>BACARDI MOJITO PITCHER</b> Bacardi white rum, fresh mint, lime juice and house made gomme syrup, topped with soda.	\$40
<b>PIMMS PITCHER</b> Pimms mixes with fresh orange, cherry, cucumber, mint, lime and lemon then topped with ginger ale and lemonade.	\$40
<b>FICTION LLB</b> Kettle one Vodka, Brookvale Union LLB, sours, and topped with lemonade with a drizzle of lime and bitters.	\$40
<b>CAPTAIN'S ORDERS</b> Captain morgan coconut and watermelon rum mixed with watermelon puree and topped with lemonade.	\$40
<b>SKIPPER'S CHOICE</b> Captain Morgan Tropical mixed with sours and ginger ale.	\$40



## MOCKTAILS

\$12 each

---

### 'NO'JITO

Fresh lime juice, house made gomme syrup, mint and charged with soda.

---

### MANGO WIES BAR

Finest Mango puree, shaken with pineapple juice and cream of coconut.

---

### WATERMELON COOLER

Finest watermelon mixed with cranberry juice and topped with soda.

---

### VIRGIN MARY

Finest bloody mary, with a dash of celery and a hint of cucumber.

---

### GRAPEFRUIT FIZZ

Finest Grapefruit shaken with agave nectar and topped with soda.

---

### HUBBA BUBBA

Bubble gum syrup mixed with finest lemon sour and charged with lemonade.

---

### STRAWBERRY & MINT SMASH

Finest Strawberry Puree churned with mint and sours then topped with soda.

## MINI COCKTAILS

\$10 each  
All served in 30ml glass

---

### MINI BEER

Licor 43 with floated cream.

---

### JAM DOUGHNUT

Marie blackcurrant with floated baileys and a sugar rim.

---

### Q.F

Midori, kahlua and Baileys.

---

### BEAM ME UP SCOTTY

Kahlua, Banana liquor and Baileys..

---

### L.T.S

Lychee liquor and tequila.

---

### C.S.COWBOY

Butterscotch Schnapps and Baileys.

---

### NUTTY FIX

Frangelico with sugar coated fresh lime.

---

### B.J

Kahlua, Baileys and whipped cream on top.





BEER & LIQUOR

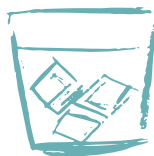




*"Ashes to ashes, dust to dust. When life gets tough, beer is a must."*



# WHISKEY



## SCOTCH

GLENFIDDICH 12 Y/O	MONKEY SHOULDER
HIGHLAND PARK 12 Y / O	LAGAVULIN 16 Y/O
GLENMORANGIE 10 Y/O	MORTLACH LIMITED 13 Y/O
TALISKER LIMITED 8 Y/O	GLENDRONACH PARLIAMENT 21 Y/O
JOHNNIE WALKER BLACK	GLENDRONACH TRADITIONALLY PEATED
JOHNNIE WALKER BLUE	
CHIVAS REGAL 12 Y/O	GLENDRONACH ALLARDICE 18 Y/O

## JAPANESE

THE HAKUSHU

THE TOTTORI

THE KURAYOSHI 18 Y/O

## IRISH

JAMESON

DUBLINER HONEYCOMB

## CANADIAN

CANADIAN CLUB

FIREBALL

## AMERICAN

WILD TURKEY

MAKERS MARK

BUFFALO TRACE

JACK DANIELS

## 1792

SHEEP DOG PEANUT BUTTER WHISKEY

VAN WINKLE SPECIAL RESERVE 12 Y/O







# SPIRITS



## RUM

CAPTAIN MORGAN ORIGINAL SPICED	BACARDI
CAPTAIN MORGAN TROPICAL	MATSALEM GRAN RESERVA
CAPTAIN MORGAN COCONUT AND WATERMELON	MOUNT GAY
CAPTAIN MORGAN BLACK SPICED	RON ZACAPA 23 SOLERA
SAILOR JERRY ORIGINAL SPICED	RON ZACAPA XO
BUNDABERG RUM BALL LIQUER	PLANTATION DARK PINEAPPLE
PAMPERO BLANCO	DICTADOR ICON RESERVE 12 Y/O
	BUNDABERG

## TEQUILA

DON JULIO BLANCO	PATRON SILVER
DON JULIO REPOSADO	PATRON REPOSADO
DON JULIO ANEJO	CAZADORES/O
DON JULIO 1942 SMALL BATCH	

## COGNAC

HENNESEY V.S	HENNESEY V.S.O.P
--------------	------------------

## VODKA

GREY GOOSE	CIROC CITRUS
CIROC	SMIRNOFF
BELVEDERE	

## GIN

WHITLEY NIEL RHUBARB & GINGER	BOODLES MULBERRY GIN
WHITLEY NIEL PINK GRAPEFRUIT	HERNO OLD TOM GIN
TANQUEARY	AVIATION
BOMBAY SAPPHIRE	GORDONS
	GORDONS PINK

# LIQUOR



## LIQUERS

FRANGELICO	ALIZE ROSE
BAILEYS	CHAMBORD
KAHLUA	LICOR 43
MR BLACK	GALLIANO AMERETTO
PAVAN	OPAL NERA
MIDORI	OPAL BIANCO
MALIBU	AGWA
ALIZE BLEU	

## DIGESTIF/APERTIF/OTHER

JAGERMEISTER	CAMPARI
CHARTREUSE GREEN	APEROL



# BEER



## LOCAL

	<i>schooner</i>	<i>pint</i>	<i>stubbie</i>
XXXX GOLD (DRAUGHT)	8.5	11.5	
GREAT NORTHERN SUPER CRISP (DRAUGHT)	9	12	
GREAT NORTHERN ORIGINAL (DRAUGHT)	9.5	12.5	
BYRON BAY PREMIUM LAGER (DRAUGHT)	10	13.5	
GREAT NORTHERN ZERO			6
GREAT NORTHERN			8
JAMES BOAGS PREMIUM LIGHT			7

## IMPORTED

GUINNESS (DRAUGHT)	11	14.5	
ASAHI (DRAUGHT)	14.5		
PERONI LEGERRA			8.5
HEINKEN			9.5
CORONA			9.5

## CRAFT BEER

LITTLE CREATURES 'ROGERS' (DRAUGHT)	11	14.5	
STONE & WOOD PACIFIC ALE (DRAUGHT)	11	14.5	
JAMES SQUIRE "150 LASHES" (DRAUGHT)	11	14.5	
BALTER XPA (DRAUGHT)	11.5	15	
JAMES SQUIRE GINGER BEER (DRAUGHT)	13.5	17	
BURLEIGH BIG HEAD			9.5
CANADIAN CLUB	14	17.5	

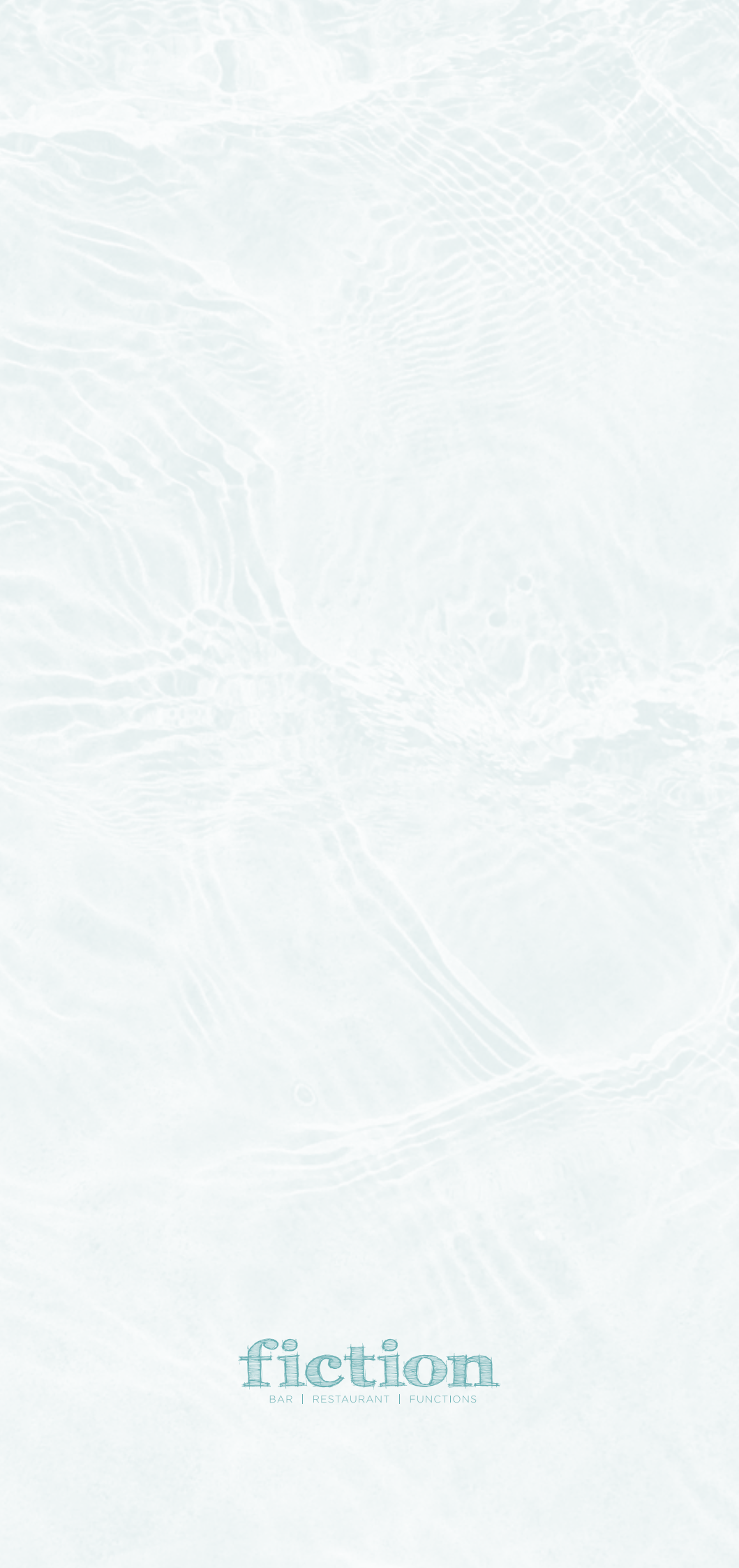
## CIDER

YOUNG HENRYS CLOUDY APPLE CIDER			10.5
SOMERSBY PEAR CIDER			10.5

## R.T.D

BROOKVALE UNION VODKA LLB			12
BROOKVALE UNION LIME SELTZER			12
BROOKVALE UNION GRAPEFRUIT SELTZER			12





**fiction**  
BAR | RESTAURANT | FUNCTIONS